



## **E-Trade User Manual**

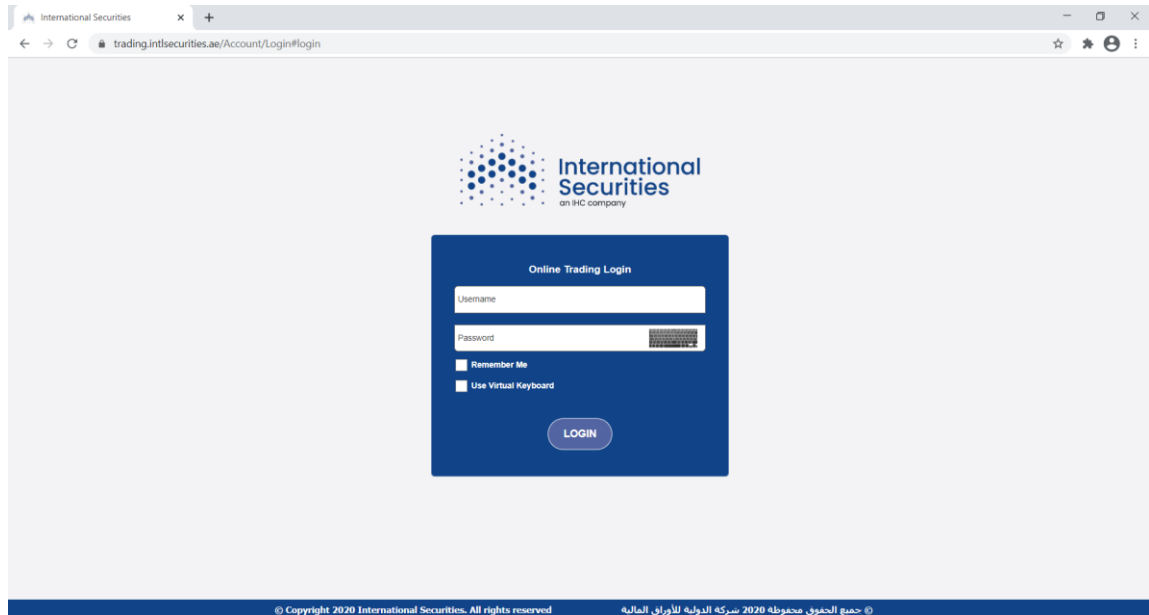
## Contents

<b>LOGIN .....</b>	<b>2</b>
<b>WORKSPACES .....</b>	<b>4</b>
<b>DEFAULT WORKSPACE (ETRADE) .....</b>	<b>4</b>
<b>1. CLIENT ACCOUNT DETAILS .....</b>	<b>4</b>
<i>a. Account Summary. ....</i>	<i>5</i>
<i>b. Portfolio.....</i>	<i>5</i>
<i>c. Orders.....</i>	<i>5</i>
<i>d. Trade. ....</i>	<i>5</i>
<i>e. Statement of account. ....</i>	<i>6</i>
<i>f. Chart.....</i>	<i>6</i>
<b>2. MARKET WATCH .....</b>	<b>6</b>
<i>a. Profiles.....</i>	<i>7</i>
<i>b. Market Depth. ....</i>	<i>8</i>
<i>c. Instant Order. ....</i>	<i>9</i>
<i>d. Sorting and Ordering. ....</i>	<i>9</i>
<i>e. Extra Features. ....</i>	<i>9</i>
<b>3. MARKET SUMMARY .....</b>	<b>10</b>
<b>CUSTOM WORKSPACE .....</b>	<b>11</b>
<b>ORDER TICKET .....</b>	<b>13</b>
<b>E-TRADE SETTINGS .....</b>	<b>15</b>

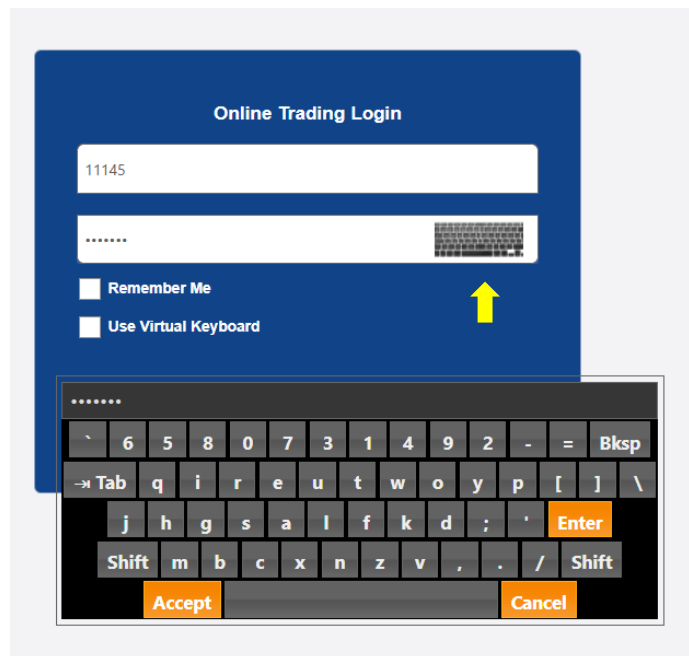
## LOGIN

Please use the following steps to login and start using International Securities E-Trade:

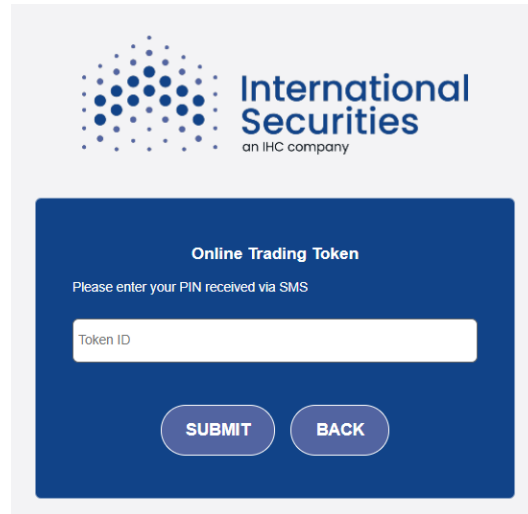
1. Visit the following address on your browser: <https://trading.intlsecurities.ae>
2. Once the login form will show, fill your username and password using your keyboard and click Login button.



*The E-Trade support virtual keyboard in which you can use to enter the password using the mouse rather than using the keyboard (virtual keyboards are used for better security as hackers can steal the keyboard typing), to open the virtual keyboard, click on the keyboard icon that is placed on the right of the password field and start clicking on the characters that represent the password.*



- After clicking Login button, you will be directed to another page to enter a token that represent an extra authentication for more improved security, you will receive the token as SMS on your registered mobile number, enter the received SMS code in the Token ID field and click submit.



**International Securities**  
an IHC company

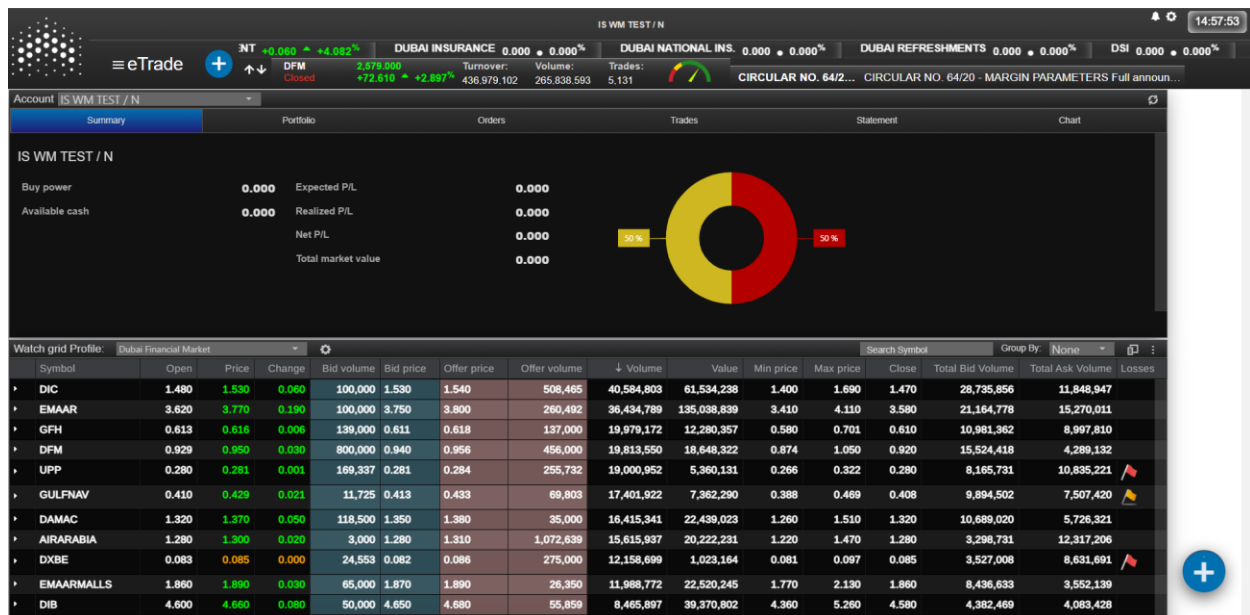
**Online Trading Token**

Please enter your PIN received via SMS

Token ID

SUBMIT BACK

- You will be now logged in successfully and the default workspace will be used.



## WORKSPACES

The E-Trade based on workspace environment, where you can create multiple workspaces and customize each the way that suit your trading preference, where we have built one default workspace called “eTrade” which give the best user experience and demonstrate the maximum market and trading information in one screen.

The workspace is actually a separate screen that can organize a set of either market or trading components, our E-Trade has a varied list of components which you can add to your workspace, including but not limited to orders/trades book, statement of account, portfolio report, advanced market watch, market depth and rich multimarket data feeds components.

All workspaces share the upper part of the screen which contain the main menu and the markets overview, the main menu include managing the workspaces and some general settings for the E-Trade itself, while the markets overview will show market status/summary, tape ticker and market news. You can click the double arrow button to switch to another market



In the following sections, we will explain the default workspace and present each component, then we will guide you how to create a custom workspace.

### DEFAULT WORKSPACE (eTrade)

The eTrade workspace is divided into three main sections:

#### 1. Client Account Details

This section provides you with full information about your account including your cash balances, orders, portfolio and statement of account.

There will be a small menu buttons at the top right of each window tab in which you can use to export the resulted data as a file by clicking on “Export” button or email the data to your registered email by clicking on the email icon.



The following are the information related to your account within this section:

- Account Summary: The account position including the cash balances and the profit/loss, different sub account can be selected from the account menu.



- Portfolio: This is your account holdings with some important indicators like market value, cost, breakeven price and the profit/loss; you can right click any of your shares and select a buy or sell where this will open a new order ticket filled directly with the selected share.

Symbol	Market value	Value	Shares	Cost	Breakeven price	Close price	Real profit	Profit/Loss
ADCB	833,000	916,491	100,000	9.165	9.186	8.330	-33,881.833	-83,490.8 (-9.1%)
ADIB	352,128	355,464	77,052	4.613	4.570	4.570	-1,794.778	-3,336.6 (-0.9%)
SALAMA	285,667	290,803	429,574	0.677	0.679	0.665	18,514.838	-8,136.3 (-0.8%)
Total: Holding Cost: 1,562,758.09 Market value: 1,470,794.35 P/L: -91,963.74 Realized P/L: -1,573,790.14 Expected P/L: -91,963.74 Expected Sell Comm: 3,482.12 Net P/L: 3,482.12								

- Orders: The outstanding orders book in which you can monitor and control your orders; You can click on the small arrow on the left of the order ID to view more details, also you can right click the order then select modify or cancel order from the pop up menu.

Order ID	Account No	Type	Price	Quantity	Status
133801	0054608911	Sell	4.620	77,052	Active Order
133667	0054608911	Sell	8.600	50,000	Active Order
134183	0041563270	Sell	0.655	459,045	Fully Filled
134128	0054608911	Sell	8.450	50,000	Active Order
134271	0041563270	Buy	0.675	429,574	Fully Filled
134302	0041563270	Sell	0.689	429,574	Active Order

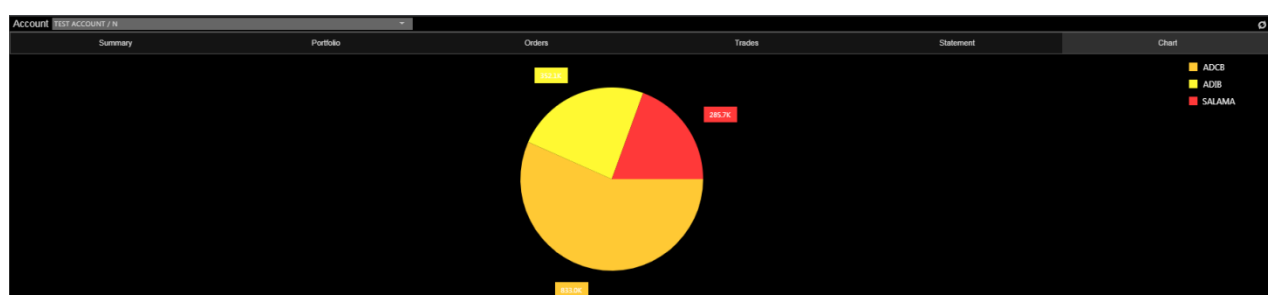
- Trades: In this book, you can check a report of your executed orders; you can click on the arrow at the most right of the executed order record to view further trade details.

Order ID	Trade ID	Symbol	Operation	Qty	Price	Value	Trade value	Account
134183	231976	ALDAR	Sell	372,048	0.655	243,691.440	243,691.440	TEST ACCOUNT
134183	231976	ALDAR	Sell	372,048	0.655	243,691.440	243,691.440	TEST ACCOUNT
134183	231977	ADIB	Sell	96,997	0.655	63,563.035	63,563.035	TEST ACCOUNT
134271	232078	EMAAR	Buy	171,258	0.675	115,599.150	115,599.150	TEST ACCOUNT
Total buy: 429,574, Value: 285,962.458 Total sell: 459,045, Value: 309,674.475								

- e. Statement of account: Here is your account statement which will reflect your buy and sell trades and their respective credit and debit transaction, it will also list any deposit and withdrawal transaction in addition of any other accounting entries.

Account TEST ACCOUNT / N											
Summary			Portfolio			Orders			Trades		
Date	Doc. No.	Quantity	Share Price	Aug. Price	Debit	Credit	Remarks				Balance
Starting Balance											1,929,770
3/7/2019	19142	460,129	0.637	0.635	0.000	292,252.670	EMAAR Invoice No: 49873				294,182.440
3/7/2019	19143	459,045	0.639	0.641	294,179.900	0.000	ALDAR Invoice No: 49874				2,540
4/7/2019	19153	429,574	0.675	0.677	290,802.960	0.000	ADIB Invoice No: 49909				(290,800.420)

- f. Chart: A pie chart which will show the distribution of your shares quantity in your portfolio.



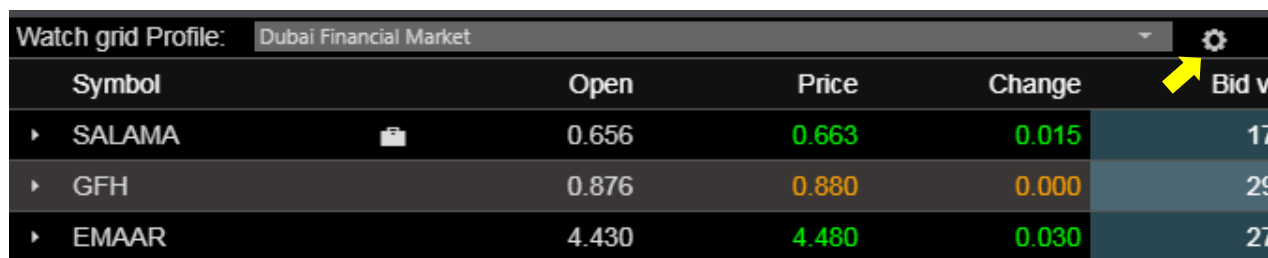
## 2. Market Watch



The E-Trade is powered by a full-fledged market watch with real-time market data updates, it can high light price changes instantly and has a rich market depth data, it also support custom profiles which allow you to build a custom set of shares to give you more focus on your tradable shares; there are extra features like sorting, custom fields selector, symbol search and export to file.

Watch grid Profile: Dubai Financial Market											
Symbol	Open	Price	Change	Bid volume	Bid price	Offer price	Offer volume	+ Volume	Value	Min price	Max price
SALAMA	0.656	0.663	0.015	175,582	0.663	0.666	65,000	42,812.001	28,327.878	0.584	0.745
GFH	0.876	0.880	0.000	295,385	0.880	0.881	22,000	10,605.867	9,340.867	0.792	1.010
EMAAR	4.430	4.480	0.050	276,677	4.480	4.490	26,815	6,872.577	30,807.598	4.010	5.110
AMILAK	0.270	0.280	0.010	190,000	0.276	0.279	143,704	4,450.093	1,231.386	0.243	0.310
ARTC	1.530	1.550	0.020	160,357	1.550	1.560	688,068	2,991.444	4,620.720	1.380	1.750
UPP	0.332	0.332	-0.001	304,850	0.333	0.334	247,920	2,312.646	769.067	0.300	0.382
DARTAKAFUL	0.604	0.600	-0.004	100,000	0.600	0.602	3,193	1,531.821	929.616	0.544	0.694
DIB	5.140	5.140	-0.010	265,840	5.130	5.140	27,264	1,220.879	6,284.652	4.640	5.920
ALSALAMKW	0.440	0.440	-0.001	50,000	0.440	0.444	20,000	1,000.000	439.550	0.397	0.507
AIRARABIA	1.060	1.060	-0.010	1,811,918	1.050	1.060	95,154	918.876	973.879	0.963	1.230
EMAARMALLS	2.010	2.020	-0.010	516,031	2.010	2.020	157,692	814.044	1,643.721	1.830	2.330
ARMX	4.130	4.190	0.020	43,750	4.170	4.180	217,347	760.550	3,177.929	3.760	4.790
TABREED	1.730	1.750	0.010	47,968	1.730	1.740	74,627	757.000	1,312.746	1.570	2.000
AAN	0.168	0.168	-0.002	218,250	0.167	0.170	71,000	854.173	143.420	0.152	0.193
DIC	1.240	1.250	0.000	426,597	1.240	1.250	117,085	633.010	791.174	1.130	1.430

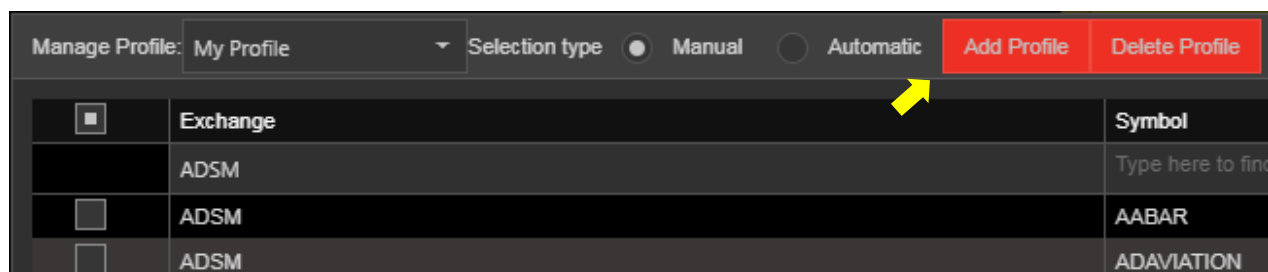
We will come in more details for each feature supported by the market watch in the following:

- a. Profiles: A profile is your custom list of shares which you would like to see in the market watch, where you can create as many profiles as you wish, and you can combine shares from different markets; to create a profile, please proceed with the following steps:
  - i. Click on the profiles settings icon at the top of the market watch.



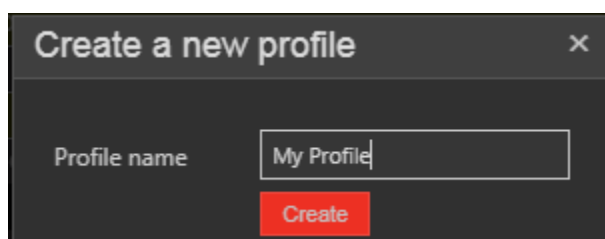
Watch grid Profile: Dubai Financial Market					
Symbol		Open	Price	Change	Bid v
▶ SALAMA		0.656	0.663	0.015	17
▶ GFH		0.876	0.880	0.000	29
▶ EMAAR		4.430	4.480	0.030	27

- ii. From the “Manage Profile” pop up window, click on “Add Profile” button.



Manage Profile:	My Profile	Selection type	<input checked="" type="radio"/> Manual	<input type="radio"/> Automatic	Add Profile	Delete Profile
<input checked="" type="checkbox"/>	Exchange					Symbol
	ADSM					Type here to find
<input type="checkbox"/>	ADSM					AABAR
<input type="checkbox"/>	ADSM					ADAVIATION

- iii. A new window will appear, enter the desired profile name and click create.



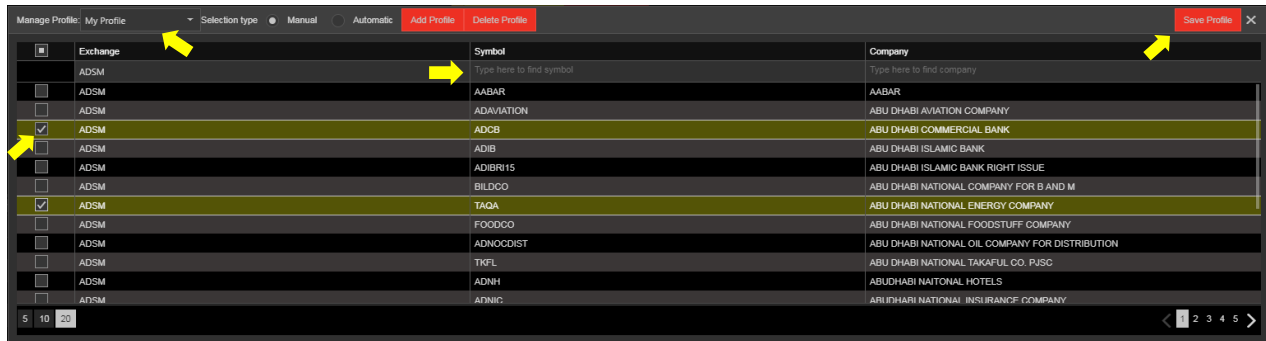
### Create a new profile

Profile name

Create



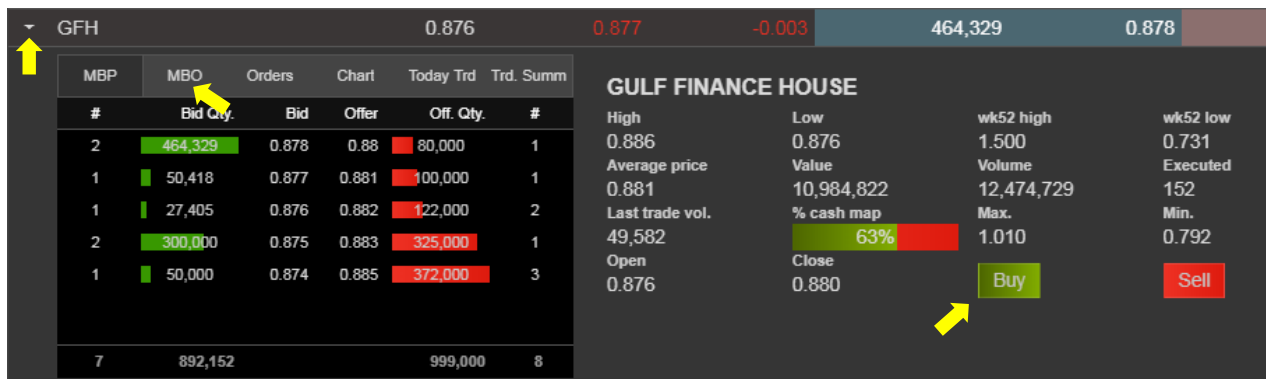
- iv. Select the profile from the profiles menu and tick the checkbox at the left of the shares you would like to add to the profile then click save; you can search for specific share by its symbol, company name or by market name, to do so, start typing underneath the columns title and the shares will get filtered as you type.



- v. Finally, select your created profile from the “Watch Grid Profile” menu at the top of the market watch then your custom list of shares will be displayed.



- b. Market Depth: By clicking on the small arrow at the left of the share symbol, this will open the market depth where you will get extra trading information about the intended share; you can also click on Buy/Sell button to open the order ticket filled directly with that share.



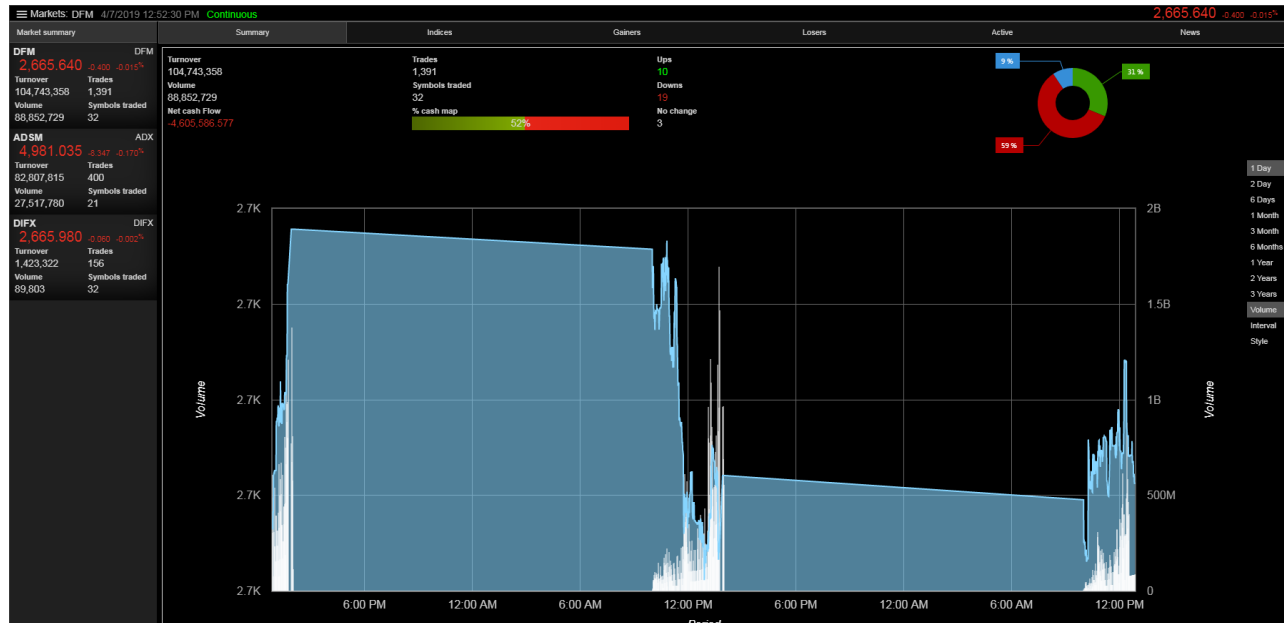
- c. Instant Order: You can place an order directly from the market watch, just right click the share you would like to place an order for and click buy or sell, then the order ticket will be opened and filled automatically with the share; when you have a specific share in your portfolio, the market watch will show a briefcase near the share to indicate that it's available in your portfolio.

Watch grid Profile: Dubai Financial Market					
Symbol		Open	Price	Change	Bid vol
▶ SALAMA		0.656	0.666	0.018	13
▶ GFH		0.876	0.877	-0.003	464
▶ EMAAR		4.430	4.450	0.000	180
▶ AMLAK		0.270	0.275	0.005	230
▶ ARTC		1.530	1.560	0.030	9
▶ UPP		0.332	0.331	-0.002	100
▶ DARTAKAFUL		0.604	0.600	-0.004	4

- d. Sorting and Ordering: Sorting a field in market watch is easy, just click the column title and it will be sorted, click again to reverse the sort, you can also click and hold the column title and drag it between other columns to reorder the market watch fields as desired.
- e. Extra Features: from the market watch top right menu, you have a variety of more features, including "Column Chooser" which let you select different fields to be displayed, "Group By" which can group the shares by market or industry, "Search Symbol" which can help to locate a specific share in the market watch, and the "Export" which allow you to export the current shares and data to a file.

Search Symbol		Group By: None		
Min price	Max price	Close		
0.584	0.745	0.648		
0.792	1.010	0.880		
4.010	5.110	4.450		

E-Trade support multimarket and is able to display their summary data in real-time mode all in one screen, this include but not limited to market status, indices, gainers, losers and news.



Markets: ASDM 4/7/2019 12:52:54 PM <span>Continuous</span>										4,980,861 -9.521 -0.110%	
Market summary		Summary		Indices		Gainers		Losers		Active	News
DFM	DFM	Curr. Val	Change	Low	High	Last	Volume	Turnover			
2,665,640	-0.600 -0.015%										
Turnover	Trades	Telecommunication Index									
104,940,710	1,292	4,147.421 -4.955(0.120%) 4,137.513 4,152.378 0.000 148,536 2,485,769									
Volume	Symbols traded	Industrial Index									
89,065,529	32	2,392.237 0.000(0.730%) 2,392.237 2,392.237 0.000 20,000 56,000									
ADSM	ADSM										
4,980,861	-9.521 -0.110%	General Index									
Turnover	Trades	4,981.920 -7.456(0.150%) 4,974.761 4,984.134 0.000 10,940,680 62,628,731									
83,030,360	402	Health Care Index									
Volume	Symbols traded	1,354.319 -4.486(0.330%) 1,383.194 1,388.814 0.000 187,506 75,800									
28,117,377	21	Banks and Financial Services Index									
		5,920.615 -27.247(0.270%) 5,982.008 5,906.102 0.000 3,468,963 49,467,734									
DIFX	DIFX										
2,665,980	-0.960 -0.032%	Real Estate Index									
Turnover	Trades	5,002.929 +73.337(+2.500%) 2,929.591 3,008.313 0.000 4,573,560 8,280,981									
1,423,322	156	Insurance Index									
Volume	Symbols traded	1,873.509 +0.201(+0.010%) 1,873.509 1,873.509 0.000 76,000 49,780									
89,803	32	Energy Index									
		1,626.873 -18.500(-1.120%) 1,615.744 1,644.573 0.000 731,744 634,385									

[illegible]

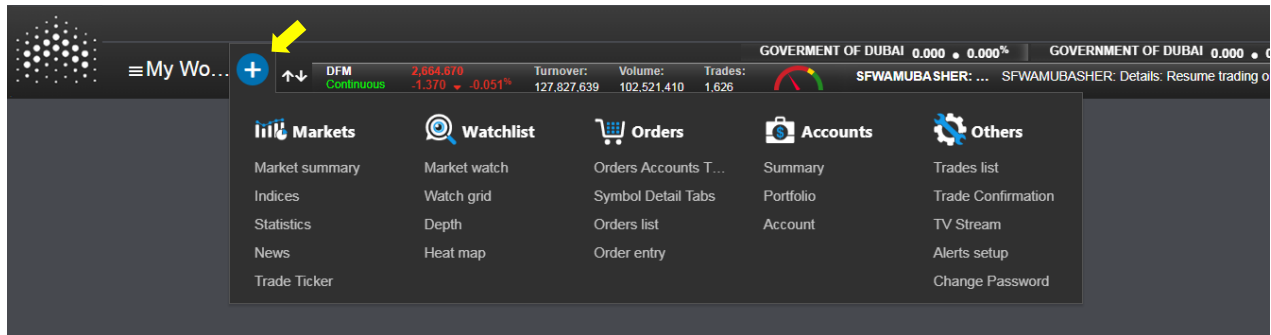
Markets: AD5M 4/7/2019 12:53:15 PM Continuous										4,978.895 -10.457 -0.210%	
Market summary		Summary				Indices		Gainers	Losers	Active	News
DFM	DFM	Symbol	Last	Change	Low	High	Volume	Value			
2,665,510	-0.530 -0.020%	ALQUDRA	0.901	-0.100(-10.000%)	0.900	0.901	300,000	270,000.000			
Turnover	Traders										
106,713,474	1,401										
Volume	Symbols traded	TAQA	0.750	-0.049(-6.130%)	0.720	0.750	351,248	261,402.440			
89,971,980	32	ABU DHABI NATIONAL ENERGY COMPANY									
AD5M	ADX	RAKCC	0.500	-0.019(-3.770%)	0.500	0.500	100,000	50,000.000			
4,978.895	-10.457 -0.210%	RAG AL KHAYMA CEMENT COMPANY									
Turnover	Traders	MANAZEL	0.370	-0.010(-2.630%)	0.367	0.389	10,287,297	3,813,379.880			
83,118,634	404	INVALEC									
Volume	Symbols traded	ASMAK	0.370	-0.003(-0.440%)	1.340	1.390	1,023,000	1,421,420.000			
28,141,338	21	INTERNATIONAL HOLDINGS COMPANY PJSC									
DIFX	DIFX	AGTHIA	0.140	-0.040(-1.140%)	3.410	3.470	13,380	46,365.540			
2,665,980	-0.560 -0.020%	AGTHIA GROUP PJSC									
Turnover	Traders	ESHRAQ	0.065	-0.004(-1.000%)	0.394	0.399	184,430	72,955.070			
1,423,322	156	ESHRAQ INVESTMENT COMPANY									
Volume	Symbols traded	WAZ	0.070	-0.008(-0.850%)	2.330	2.330	7,000,000	16,275,000.000			
89,803	32	WAZAT AL ZAWAYA HOLDING PJSC									
		NBAD	14.720	-0.000(-0.540%)	14.700	14.740	3,226,612	47,496,366.160			
		FIRST ABU DHABI BANK									

Markets: AD5M 4/7/2019 12:53:24 PM Continuous										4,978.895 -10.457 -0.210%	
Market summary		Summary				Indices		Gainers	Losers	Active	News
		DFM	Symbol	Last	Change	Low	High	Volume	Value		
2,665,510 -0.530 -0.020%			ALDAR	1.990	+0.050(+2.600%)	1.890	1.940	4,230,918	8,130,461.440		
Turnover	Traders										
106,713,474	1,401										
Volume	Symbols traded		NBAD	14.720	-0.080(-0.540%)	14.700	14.740	3,226,612	47,496,366.160		
89,971,980	32		FIRST ABU DHABI BANK								
AD5M		ADX	MANAZEL	0.370	-0.010(-2.630%)	0.367	0.389	10,306,000	3,820,299.990		
4,978.895 -10.457 -0.210%			ETISALAT	16.740	-0.020(-0.120%)	16.700	16.760	148,536	2,465,768.600		
Turnover	Traders		ETISALAT								
83,118,634	404										
Volume	Symbols traded		ADCB	8.350	0.000(0.000%)	8.300	8.390	246,469	2,059,478.870		
28,141,338	21		ABU DHABI COMMERCIAL BANK								
DIFX		DIFX	DANA	0.945	-0.005(-0.530%)	0.940	0.950	371,751	349,895.600		
2,665,980 -0.560 -0.020%			DANA GAS PJSC								
Turnover	Traders		TAGA	0.700	-0.048(-6.130%)	0.720	0.750	351,248	261,402.440		
1,423,322	156		ABU DHABI NATIONAL ENERGY COMPANY								
Volume	Symbols traded		RAKPROP	0.434	+0.003(+0.700%)	0.432	0.445	342,642	150,499.950		
89,803	32		RAK PROPERTIES								
			ARKAN	0.410	0.000(0.000%)	0.406	0.411	591,437	242,579.420		
			ARKAN BUILDING MATERIALS COMPANY								

Markets: DFM 4/7/2019 12:53:31 PM Continuous										2,665.510 -0.530 -0.020%					
Market summary		Summary			Indices			Gainers		Losers		Active		News	
DFM		DFM			4/7/2019			SFWAMUBASHER: Details: Resume trading on SFWAMUBASHER shares starting from 10:30 AM after disclosi							
2,665,510 -0.530 -0.020%								SFWAMUBASHER: Details: Resume trading on SFWAMUBASHER shares starting from 10:30 AM after disclosi							
Turnover		Trades			4/7/2019			SFWAMUBASHER: Details: Resume trading on SFWAMUBASHER shares starting from 10:30 AM after disclosi							
107,273,474 1,402								SFWAMUBASHER: Details: Resume trading on SFWAMUBASHER shares starting from 10:30 AM after disclosi							
Volume		Symbols traded			4/7/2019			SFWAMUBASHER: Details: Resume trading on SFWAMUBASHER shares starting from 10:30 AM after disclosi							
90,096,980 32								SFWAMUBASHER: Details: Resume trading on SFWAMUBASHER shares starting from 10:30 AM after disclosi							
ADSM		ADX			3/7/2019			DEPA: Details: Depa announces appointment of Group Chief Executive Officer Full announcem							
4,979,895 -10.497 -0.210%								DEPA: Details: Depa announces appointment of Group Chief Executive Officer Full announcem							
Turnover		Trades			3/7/2019			DEPA: Details: Depa announces appointment of Group Chief Executive Officer Full announcem							
83,118,634 404								DEPA: Details: Depa announces appointment of Group Chief Executive Officer Full announcem							
Volume		Symbols traded			3/7/2019			DEPA: Details: Depa announces appointment of Group Chief Executive Officer Full announcem							
28,141,338 21								DEPA: Details: Depa announces appointment of Group Chief Executive Officer Full announcem							
DIFX		DIFW			2/7/2019			DPW: Details: DP World announces closing of P&O Ferries Transaction Full announcement: h							
2,665,980 -0.980 -0.020%								DPW: Details: DP World announces closing of P&O Ferries Transaction Full announcement: h							
Turnover		Trades			2/7/2019			DPW: Details: DP World announces closing of P&O Ferries Transaction Full announcement: h							
1,423,322 156								DPW: Details: DP World announces closing of P&O Ferries Transaction Full announcement: h							
Volume		Symbols traded			2/7/2019			DPW: Details: DP World announces closing of P&O Ferries Transaction Full announcement: h							
89,803 32								DPW: Details: DP World announces closing of P&O Ferries Transaction Full announcement: h							
					2/7/2019			ADMISSION TO TRADING NOTICE 1 SUB TIER 1 SUKUK COMPANY Full announcement: Details: ADMISSION TO TRADING NOTICE 1 SUB TIER 1 SUKUK COMPANY Full announcement:							

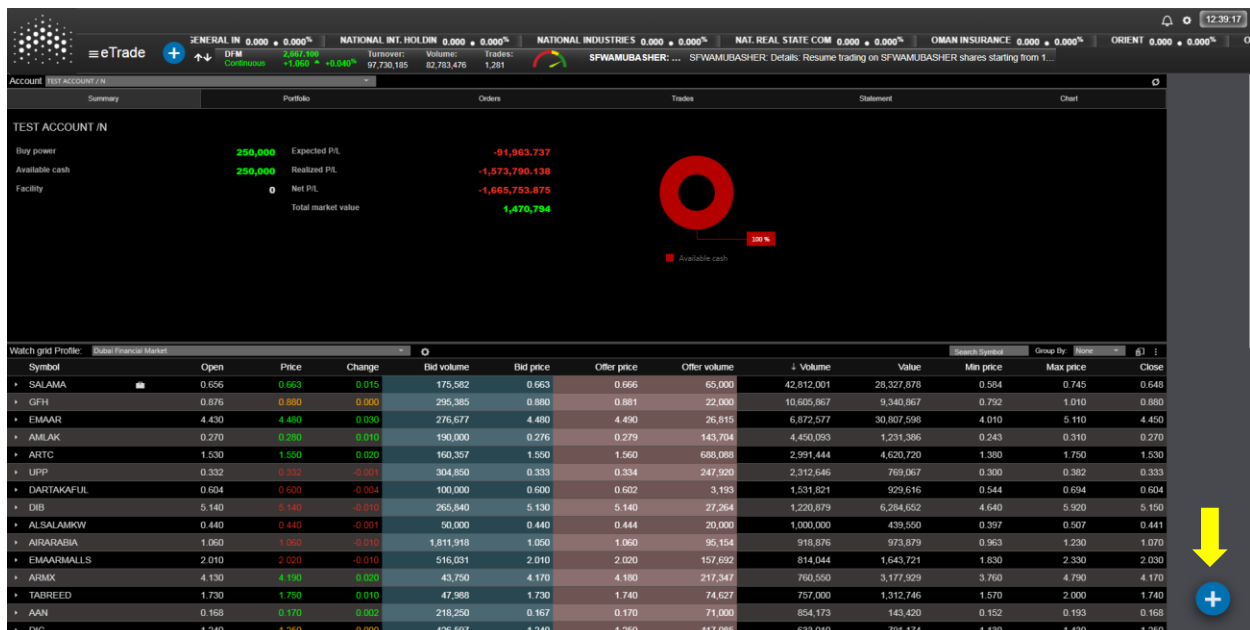


- Once created, an empty screen will be shown, click on the blue plus sign near the workspace title, this will open the available trading windows menu items which you can add, click on the desired item then it will be added automatically to your workspace, after that you can move, rearrange and resize the windows in convenient way to your need.



## ORDER TICKET

The order ticket is located conveniently in the screen to be handy and available all the time for faster order placement, the blue plus button at the bottom right of the screen will remain at its place and above any other window for easier access, clicking on it will open the order ticket right away.



Once the ticket appear, just select the desired sub account, search for the share you want to order by typing few characters, enter the quantity and your price, then fill the order options you want, finally click “Place into market” and your order will be dispatched to the market; if you want to place an order that uses the current market price, then just leave the price field empty.

Quick order

Account

TEST ACCOUNT / N

Symbol

ETISALAT

ETISALAT

16.740 -0.020 -0.120%

ETISALAT

Bid vol.	Bid price	Offer price	Offer vol.
28,757	16.740	16.760	76,971
Executed	Max.	Min.	Average price
49	19.260	15.100	16.737

Buy power

Cash

Owned shr.

more...

2.885

2.885

0

Order Value

All Balance

All Positions

less...

Order Type

☒ Buy
 ☐ Sell

Quantity

50,000

Price

16.7

Order value

836,962.32

Validity

Day

Validity date

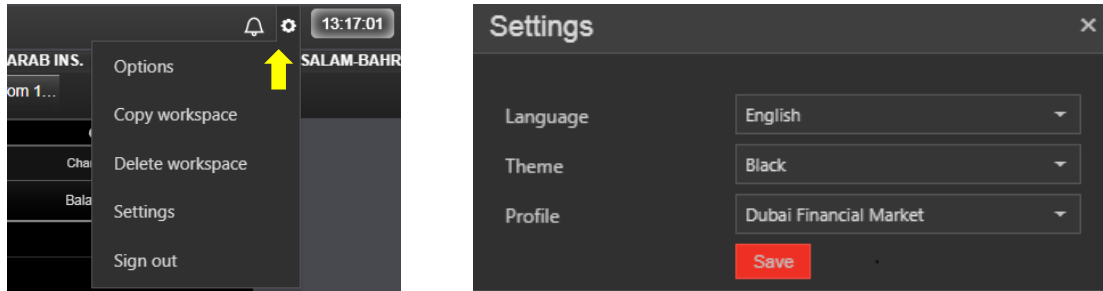
7/4/2019

Place into market

more...

## E-TRADE SETTINGS

The settings menu is located at the top right of the screen, it can help you configure your E-Trade preferences, where you can delete the current workspace, duplicate it, change the language, change the theme and set the default profile which will be automatically selected in the market watch.



E-Trade has a default black theme, while it offers another couple of themes, White and blue, the following picture is a sample for the White theme.

Account: **BSF ACCOUNT / %**

Summary: DFM Continuous 2,664,740 -1,300 -0.049% Turnover: 127,167,606 Volume: 101,587,519 Trades: 1,616

Portfolio:

Date	Doc. No.	Quantity	Share Price	Avg. Price	Debit	Credit	Remarks
Starting Balance							1,929,770
3/7/2019	19142	460,129	0.637	0.635	0.000	292,252,670	EMAAR Invoice No: 49873
3/7/2019	19143	459,045	0.639	0.641	294,179,900	0.000	ALDAR Invoice No: 49874
4/7/2019	19163	429,574	0.675	0.677	290,802,960	0.000	ADIB Invoice No: 49909

Watch grid Profile: Dubai Financial Market

Symbol	Open	Price	Change	Bid volume	Bid price	Offer price	Offer volume	Volume	Value	Min price	Max price	Close
SALAMA	0.656	0.665	0.017	100,000	0.664	0.665	10,000	44,274,283	29,300,513	0.584	0.745	0.648
GFH	0.876	0.879	-0.001	14,136	0.879	0.880	250,000	13,390,593	11,790,296	0.792	1.010	0.880
EMAAR	4.430	4.480	0.030	57,407	4.470	4.480	334,311	9,358,747	41,891,357	4.010	5.110	4.450
AMLAK	0.270	0.279	0.009	197,450	0.279	0.280	225,000	5,086,782	1,407,759	0.243	0.310	0.270
ARTC	1.530	1.590	0.060	177,000	1.580	1.590	111,396	6,364,766	9,926,624	1.380	1.750	1.530
UPP	0.332	0.331	-0.002	304,000	0.331	0.333	77,608	2,741,191	911,557	0.300	0.382	0.333
DARTAKAFUL	0.604	0.600	-0.004	4,700	0.600	0.602	3,193	1,777,121	1,076,796	0.544	0.694	0.604
GULFNAV	0.800	0.814	0.004	10,000	0.796	0.814	145,000	2,675,350	2,152,167	0.729	0.931	0.810
DIC	1.240	1.240	-0.010	1,503,283	1.230	1.240	26,488	1,999,607	2,486,855	1.130	1.430	1.250
DIB	5.140	5.140	-0.010	47,073	5.140	5.150	278,503	1,388,430	7,145,153	4.640	5.920	5.150
ALSALAMKW	0.440	0.440	-0.001	50,000	0.440	0.444	23,000	1,000,000	439,550	0.397	0.507	0.441
ARMX	4.130	4.130	-0.040	8,765	4.120	4.140	35,000	1,109,400	4,626,145	3.760	4.790	4.170
DFM	0.710	0.710	0.000	14,015	0.705	0.710	43,045	1,275,705	905,365	0.639	0.816	0.710